

TiMESH Hernia Mesh

- Titanium-polypropylene composite mesh
- Unsurpassed clinically proven biocompatibility
- Hydrophilic surface for hands-free manipulation

www.pfmmedicalusa.com

15 Years
Titanised
Meshes

Compatible with all open & laparoscopy techniques
including intraperitoneal procedures[†]

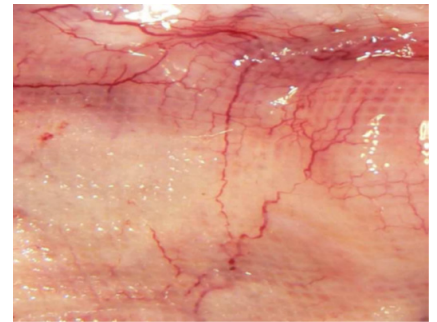
Summary

At pfmmmedical, we understand achieving a positive biocompatible response of an implanted hernia mesh is the goal for you and your patient. The covalently bonded titanium surface of TiMESH hernia mesh creates a unique hydrophilic interface on the base of macroporous polypropylene. Numerous clinical studies have demonstrated smooth parietal in-growth and minimal shrinkage with low recurrence rates. This surface modification allows for minimal manipulation without folding or migrating while evenly adhering to the abdominal ceiling during the placement procedure.

Benefits

► Proven Biocompatibility

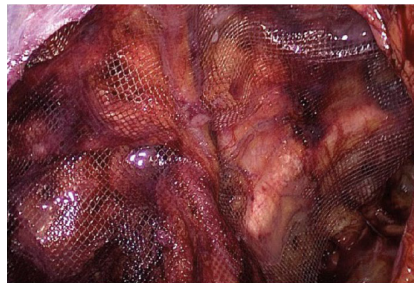
- Viable tissue in-growth & integration
- Less fibrous encapsulation & contraction
- Less inflammatory response and foreign body sensation



Intraperitoneal surface
twelve weeks post-operative

► Proven Confidence

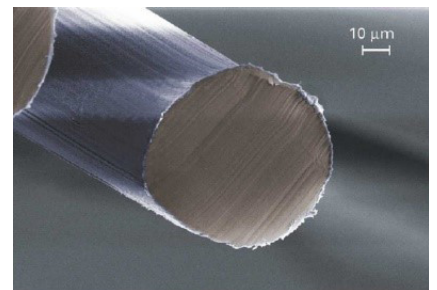
- High strength-to-weight ratios exceed maximum intra-abdominal pressure
- Hands-free manipulation
- Fixation-free capability



Abdominal ceiling adhesion
with unobstructed view of
anatomical defect

► Proven Satisfaction

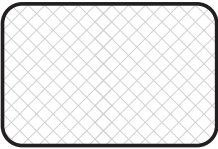
- Low post-surgical recurrence rates
- Reduced post-operative pain
- Shorter convalescence



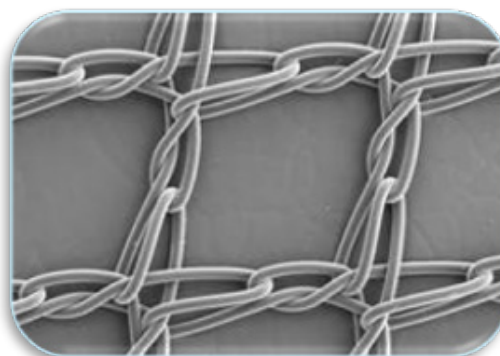
360-degree covalently
bonded titanium surface

Ordering Information

Pre-tailored square or rectangular configurations

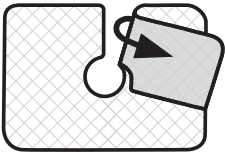
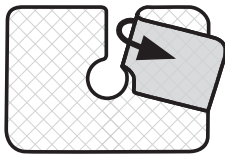
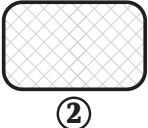
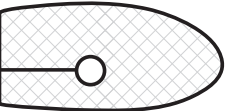
Product Configuration	Weight (Density)	REF	Description	Size	Qty / Box
	Extra Light [‡] (16 g/m ²)	6000137	TiMESH Extra Light [‡]	10 cm x 15 cm (4 in x 6 in)	3
		6001439	TiMESH Extra Light [‡]	12.5 cm x 15 cm (5 in x 6 in)	3
		6000311	TiMESH Extra Light [‡]	15 cm x 15 cm (6 in x 6 in)	3
		6000248	TiMESH Extra Light [‡]	15 cm x 20 cm (6 in x 8 in)	3
	Light (35 g/m ²)	6001435	TiMESH Light	6 cm x 9 cm (2.3 in x 3.5 in)	3
		6001436	TiMESH Light	6 cm x 11 cm (2.3 in x 4.3 in)	3
		6000138	TiMESH Light	10 cm x 15 cm (4 in x 6 in)	3
		6000312	TiMESH Light	15 cm x 15 cm (6 in x 6 in)	3
		6001448	TiMESH Light	6 cm x 40 cm (2.3 in x 15.75 in)	3
		6001440	TiMESH Light	10 cm x 25 cm (4 in x 10 in)	1
		6000140	TiMESH Light	15 cm x 20 cm (6 in x 8 in)	3
		6001449	TiMESH Light	8 cm x 40 cm (3 in x 15.75 in)	3
		6001450	TiMESH Light	10 cm x 40 cm (4 in x 15.75 in)	3
		6001441	TiMESH Light	20 cm x 25 cm (8 in x 10 in)	1
		6001442	TiMESH Light	20 cm x 30 cm (8 in x 12 in)	1
		6000139	TiMESH Light	30 cm x 30 cm (12 in x 12 in)	1
	Strong (65 g/m ²)	6000470	TiMESH Strong	10 cm x 15 cm (4 in x 6 in)	3
		6001437	TiMESH Strong	10 cm x 15 cm (4 in x 6 in)	3
		6000471	TiMESH Strong	15 cm x 15 cm (6 in x 6 in)	3
		6001438	TiMESH Strong	15 cm x 15 cm (6 in x 6 in)	3
		6000423	TiMESH Strong	15 cm x 20 cm (6 in x 8 in)	3
		6000424	TiMESH Strong	30 cm x 30 cm (12 in x 12 in)	1

Same 1 mm² macroporous design in three different weight densities



Ordering Information

Pre-tailored keyhole configurations with aperture dimensions designed to sustain natural function of the anatomical structure passing through and adjacent to the prosthesis without interference.

Product Configuration	Weight (Density)	REF	Description	Size	Qty / Box
	Light (35 g/m ²)	6001443	TiMESH Light AP with keyhole	7 cm x 10 cm (2.75 in x 4 in) with 2.2 cm (0.87 in) keyhole	3
		6001444	TiMESH Light AP with keyhole	14 cm x 14 cm (5.5 in x 5.5 in) with 3.5 cm (1.38 in) keyhole	3
		6001445	TiMESH Light AP with keyhole	14 cm x 20 cm (5.5 in x 8 in) with 3.5 cm (1.38 in) keyhole	3
 	Light (35 g/m ²)	6001446	TiMESH Light AP Set with keyhole	① 14 cm x 14 cm (5.5 in x 5.5 in) with 3.5 cm (1.38 in) keyhole ② 10 cm x 15 cm (4 in x 6 in)	3
		6001447	TiMESH Light AP Set with keyhole	① 14 cm x 20 cm (5.5 in x 8 in) with 3.5 cm (1.38 in) keyhole ② 10 cm x 15 cm (4 in x 6 in)	3
	Light (35 g/m ²)	6001452	TiMESH Light FT with keyhole	5.7 cm x 11 cm (2.25 in x 4.3 in) with 1.2 cm (0.47 in) keyhole	3
	Strong (65 g/m ²)	6001451	TiMESH Strong FT with keyhole	4.7 cm x 10 cm (1.8 in x 4 in) with 1.2 cm (0.47 in) keyhole	3

Indications for Use

The TiMESH is intended for the reinforcement of tissue during surgical repair. Specifically, the TiMESH is indicated for laparoscopic and open surgery for the repair of direct inguinal hernias, indirect inguinal hernias, femoral hernias, umbilical hernias, incisional hernias, parietal reinforcement of tissues and abdominal wall repair.

† Bittner et al. Guidelines for laparoscopic treatment of ventral and incisional abdominal wall hernias (International Endohernia Society Part III. 2013. Surg Endosc. Open Access.

‡ Not qualified for use in IPOM procedures

www.pfmmedicalusa.com

pfmmedical

PFM Medical, Inc.
 1916 Palomar Oaks Way, Ste. 150 • Carlsbad, CA 92008
 Ph: 760.758.8749 • Fax: 760.758.1167
customerservice@pfmmedicalusa.com • www.pfmmedicalusa.com

pfmmedical and the pfm logo are registered trademarks of PFM Medical, Inc. © 2022 PFM Medical, Inc.